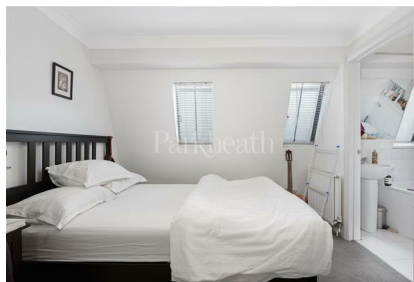


Parkheath

Sold on Service

Haverstock Hill NW3
Asking Price £375,000



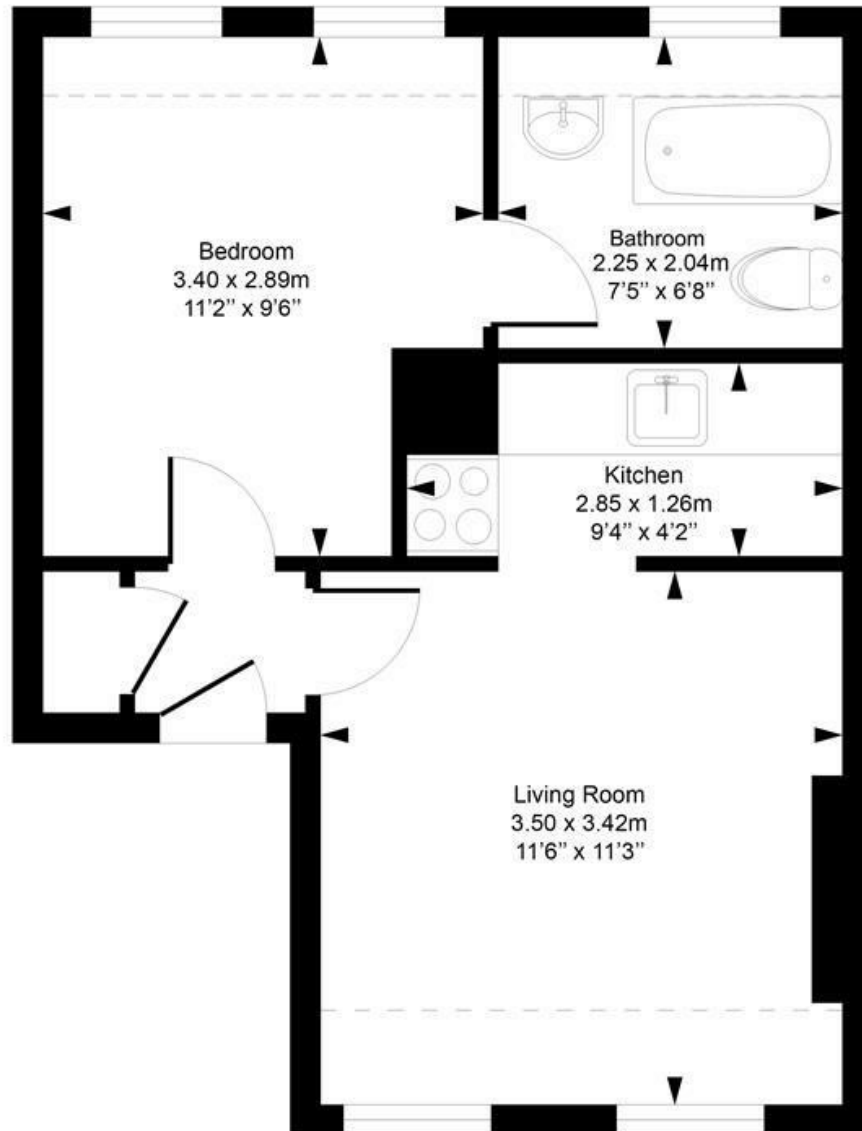
Top floor apartment (3rd floor)
Approaching 400 sq ft approx
Attractive 11' reception
11' bedroom
No ongoing chain

1 bedroom
Wood flooring
Semi-open plan 9' kitchen
New long lease
Close to Belsize Park & Chalk Farm

Belsize Park Office 020 7431 3104

Haverstock Hill

Approximate Gross Internal Area = 37.1 Sq m / 399 sq ft



Third Floor

Measured in accordance with RICS guidelines. Every attempt is made to ensure accuracy
However all measurements are approximate.

The floor plan is illustrative purposes only and is not to scale

ELLIE CLAIRE PHOTOGRAPHY LTD

www.ellieclairephotography.com

The particulars do not constitute part of an offer or contract. The particulars, including text, photographs and plans, are for the guidance only of prospective purchasers/tenants and must not be relied upon as statements of fact. The descriptions provided therein represent the opinion of the author and whilst given in good faith should not be construed as statements of fact. Nothing in these particulars shall be deemed a statement that the property is in good condition or otherwise or that any services or facilities are in good working order. All measurements are approximate